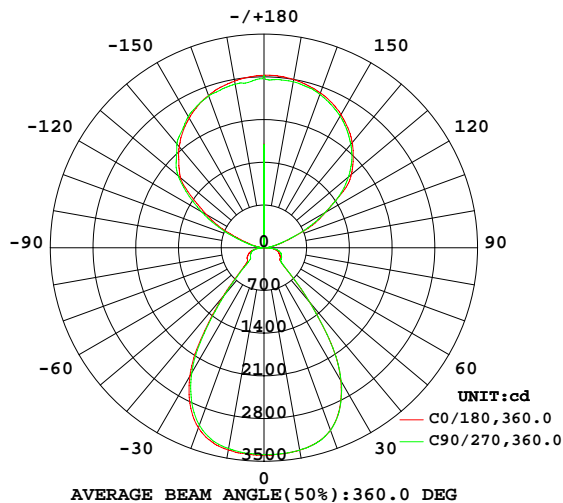


## LUMINAIRE PHOTOMETRIC TEST REPORT

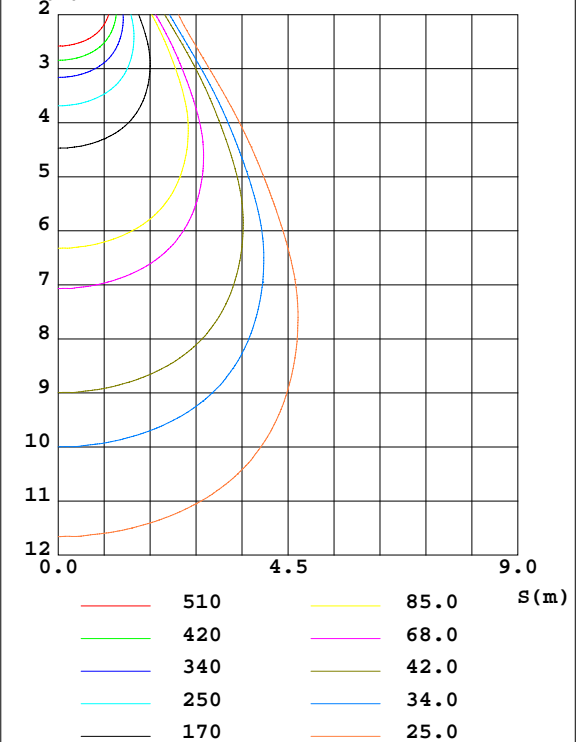
Test:U:229.70V I:0.3327A P:74.362W PF:0.9731 Freq:49.99Hz Lamp Flux:12756.8x1 lm		
NAME:	TYPE:	WEIGHT:
SPEC.:	DIM.: 900*31	SERIAL No.:
MFR.: NLD25-0017	SUR.:3.14*0.48*0.448	Shielding Angle:

DATA OF LAMP		PHOTOMETRIC DATA Eff: 171.55 lm/W			
MODEL		Imax(cd)	3402	S/MH(C0/180)	1.03
NOMINAL POWER(W)	80	LOR(%)	100.0	S/MH(C90/270)	1.02
RATED VOLTAGE(V)	230.0	TOTAL FLUX(lm)	12757	$\eta$ UP,DN(C0-180)	30.4,20.3
NOMINAL FLUX(lm)	12756.8	CIE CLASS	SEMI-IND.	$\eta$ UP,DN(C180-360)	30.5,18.8
LAMPS INSIDE	1	$\eta$ up(%)	60.8	CIBSE SHR NOM	1.00
TEST VOLTAGE(V)	230.0	$\eta$ down(%)	39.2	CIBSE SHR MAX	1.10

LUMINOUS INTENSITY DISTRIBUTION DIAGRAM



C0 PLANE ISOLUX DIAGRAM (UNIT:lx)



C Range: 0 - 360DEG  
C Interval: 5.0DEG  
Test Speed: MEDIUM  
Temperature:25.3DEG  
Operators:  
Test Date:2025-08-14

$\gamma$  Range: 0 - 180DEG  
 $\gamma$  Interval: 0.5DEG  
Test System:EVERFINE GO-2000\_V1 SYSTEM V2.0.406.10  
Humidity:65.0%  
Test Distance:11.700m [K=0.8547]  
Remarks:

## ZONAL FLUX DIAGRAM

## ZONAL FLUX DIAGRAM:

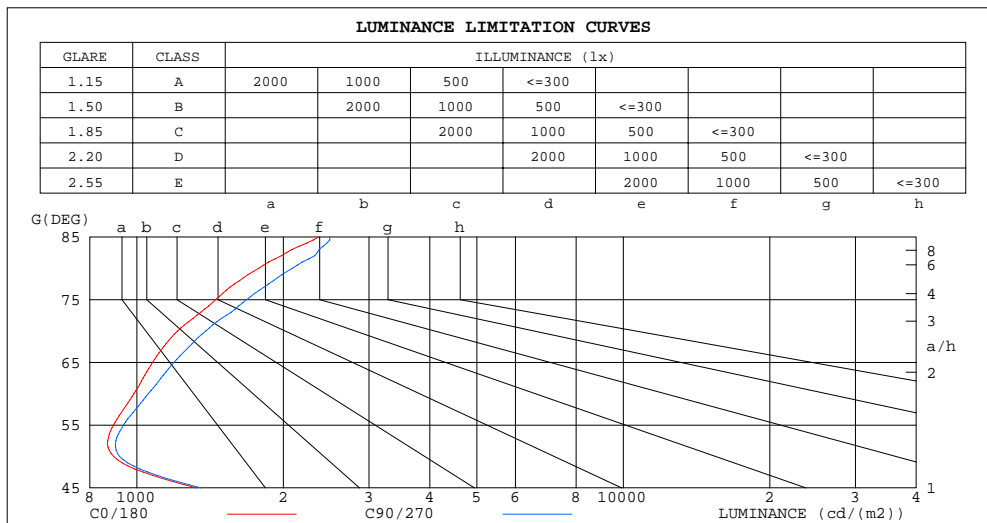
$\gamma$	C0	C45	C90	C135	C180	C225	C270	C315	$\gamma$	$\Phi$ zone	$\Phi$ total	$\Phi$ lum, lamp
10	3367	3369	3365	3355	3365	3351	3341	3340	0- 10	321.9	321.9	2.52,2.52
20	3184	3196	3185	3150	3141	3100	3095	3118	10- 20	925.7	1248	9.78,9.78
30	2520	2559	2529	2475	2429	2375	2369	2422	20- 30	1308	2556	20,20
40	1163	1203	1165	1090	1048	998.5	995.7	1052	30- 40	1113	3669	28.8,28.8
50	363.0	386.8	373.4	337.0	359.2	327.0	296.9	284.4	40- 50	461.6	4131	32.4,32.4
60	310.6	326.4	332.5	290.2	318.8	297.5	259.4	236.2	50- 60	274.9	4406	34.5,34.5
70	261.3	284.4	298.8	247.7	259.9	250.9	221.6	195.1	60- 70	268.0	4674	36.6,36.6
80	195.0	218.7	228.5	166.3	156.5	159.1	141.3	127.0	70- 80	228.1	4902	38.4,38.4
90	22.00	22.56	21.26	17.07	13.99	12.23	15.60	19.21	80- 90	96.18	4998	39.2,39.2
100	140.7	134.8	129.8	111.3	116.6	105.8	145.4	130.6	90-100	69.66	5068	39.7,39.7
110	497.8	494.6	474.2	446.8	441.4	428.0	513.8	496.6	100-110	286.3	5354	42,42
120	1167	1154	1154	1104	1092	1090	1179	1156	110-120	802.7	6157	48.3,48.3
130	1868	1843	1807	1763	1788	1793	1833	1854	120-130	1333	7490	58.7,58.7
140	2251	2234	2213	2186	2160	2168	2223	2241	130-140	1561	9051	70.9,70.9
150	2523	2508	2494	2477	2452	2443	2482	2516	140-150	1474	10524	82.5,82.5
160	2700	2687	2676	2668	2655	2651	2649	2692	150-160	1193	11717	91.9,91.9
170	2800	2790	2762	2782	2774	2770	2722	2793	160-170	772.5	12490	97.9,97.9
180	2826	2826	2826	2826	2826	2826	2826	2826	170-180	266.8	12757	100,100
DEG	LUMINOUS INTENSITY:cd									UNIT:lm		

C Range: 0 - 360DEG  
C Interval: 5.0DEG  
Test Speed: MEDIUM  
Temperature:25.3DEG  
Operators:  
Test Date:2025-08-14

$\gamma$  Range: 0 - 180DEG  
 $\gamma$  Interval: 0.5DEG  
 $\gamma$  Test System:EVERFINE GO-2000\_V1 SYSTEM V2.0.406.10  
Humidity:65.0%  
Test Distance:11.700m [K=0.8547]  
Remarks:

## LUMINANCE LIMITATION CURVES

Test:U:229.70V I:0.3327A P:74.362W PF:0.9731 Freq:49.99Hz Lamp Flux:12756.8x1 lm		
NAME:	TYPE:	WEIGHT:
SPEC.:	DIM.: 900*31	SERIAL No.:
MFR.: NLD25-0017	SUR.:3.14*0.48*0.448	Shielding Angle:



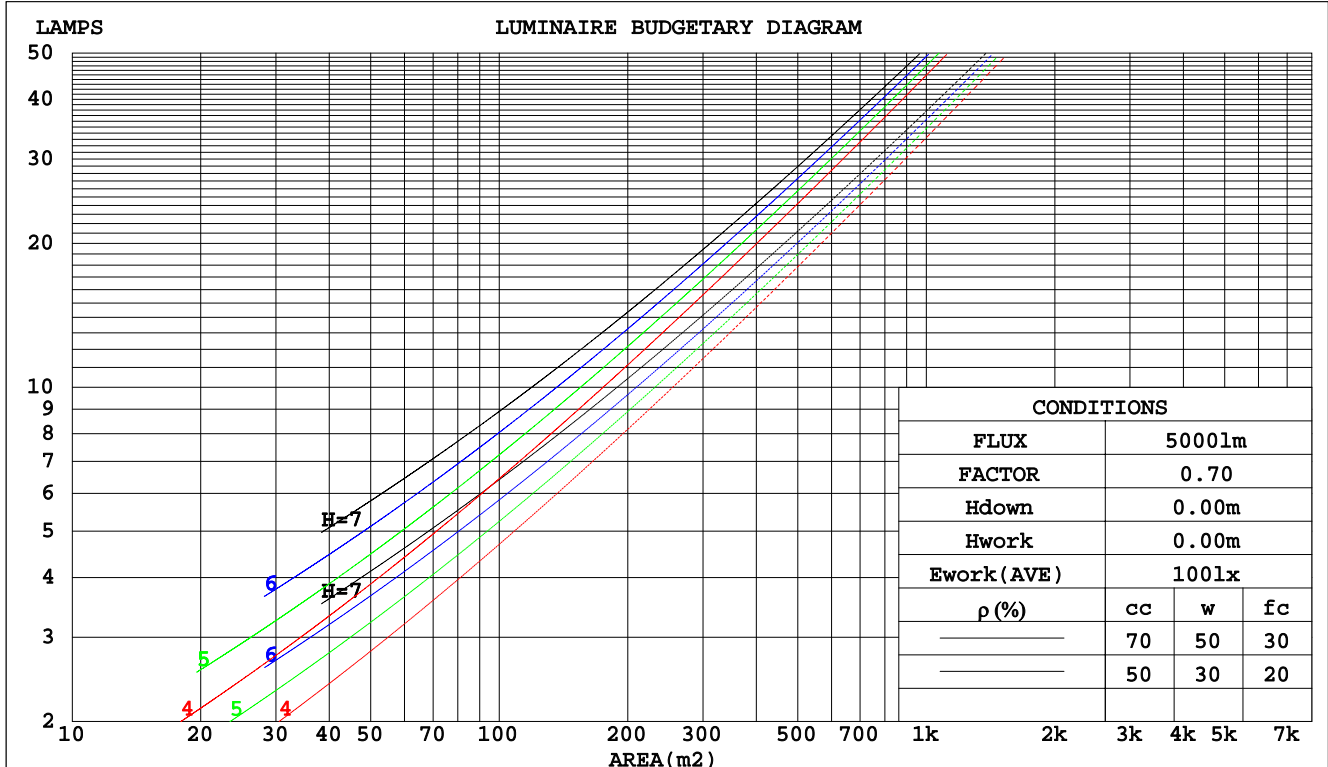
C Range: 0 - 360DEG  
C Interval: 5.0DEG  
Test Speed: MEDIUM  
Temperature:25.3DEG  
Operators:  
Test Date:2025-08-14

$\gamma$  Range: 0 - 180DEG  
 $\gamma$  Interval: 0.5DEG  
Test System:EVERFINE GO-2000\_V1 SYSTEM V2.0.406.10  
Humidity:65.0%  
Test Distance:11.700m [K=0.8547]  
Remarks:

## CU AND LUMINAIRE BUDGETARY ESTIMATE DIAGRAM

Test:U:229.70V I:0.3327A P:74.362W PF:0.9731 Freq:49.99Hz Lamp Flux:12756.8x1 lm		
NAME:	TYPE:	WEIGHT:
SPEC.:	DIM.: 900*31	SERIAL No.:
MFR.: NLD25-0017	SUR.:3.14*0.48*0.448	Shielding Angle:

pcc	80%			70%			50%			30%			10%			0
pw	50%	30%	10%	50%	30%	10%	50%	30%	10%	50%	30%	10%	50%	30%	10%	0
pfc	20%			20%			20%			20%			20%			0
RCR	RCR:Room Cavity Ratio			Coefficients of Utilization(CU)												
0.0	1.05	1.05	1.05	.95	.95	.95	.77	.77	.77	.61	.61	.61	.46	.46	.46	.39
1.0	.92	.89	.85	.84	.81	.78	.69	.67	.65	.55	.53	.52	.42	.41	.40	.34
2.0	.82	.76	.71	.75	.70	.66	.62	.58	.55	.49	.47	.45	.38	.37	.36	.31
3.0	.73	.66	.61	.67	.61	.57	.55	.51	.48	.45	.42	.40	.35	.33	.32	.27
4.0	.65	.58	.53	.60	.54	.49	.50	.46	.42	.41	.38	.35	.32	.30	.29	.25
5.0	.59	.52	.46	.54	.48	.43	.46	.41	.37	.37	.34	.31	.30	.28	.26	.22
6.0	.53	.46	.41	.49	.43	.38	.42	.37	.33	.34	.31	.28	.28	.25	.24	.21
7.0	.49	.41	.36	.45	.39	.34	.38	.33	.30	.32	.28	.26	.26	.23	.22	.19
8.0	.45	.38	.33	.41	.35	.31	.35	.30	.27	.29	.26	.23	.24	.22	.20	.17
9.0	.41	.34	.29	.38	.32	.28	.33	.28	.25	.27	.24	.21	.22	.20	.18	.16
10.0	.38	.31	.27	.35	.29	.25	.30	.26	.23	.26	.22	.20	.21	.19	.17	.15



C Range: 0 - 360DEG  
C Interval: 5.0DEG  
Test Speed: MEDIUM  
Temperature:25.3DEG  
Operators:  
Test Date:2025-08-14

γ Range: 0 - 180DEG  
γ Interval: 0.5DEG  
Test System:EVERFINE GO-2000\_V1 SYSTEM V2.0.406.10  
Humidity:65.0%  
Test Distance:11.700m [K=0.8547]  
Remarks:

## WEC AND CCEC

Test:U:229.70V I:0.3327A P:74.362W PF:0.9731 Freq:49.99Hz Lamp Flux:12756.8x1 lm					
NAME:		TYPE:		WEIGHT:	
SPEC.:		DIM.: 900*31		SERIAL No.:	
MFR.: NLD25-0017		SUR.:3.14*0.48*0.448		Shielding Angle:	

pcc	80%			70%			50%			30%			10%			0
pw	50%	30%	10%	50%	30%	10%	50%	30%	10%	50%	30%	10%	50%	30%	10%	0
pfc	20%			20%			20%			20%			20%			0
RCR	RCR:Room Cavity Ratio						Wall Exitance Coefficients(WEC)									
0.0																
1.0	.255	.145	.046	.230	.131	.042	.183	.105	.033	.139	.080	.026	.099	.057	.018	
2.0	.235	.129	.040	.212	.117	.036	.169	.094	.029	.129	.073	.023	.092	.052	.016	
3.0	.217	.116	.035	.196	.105	.032	.157	.085	.026	.120	.066	.020	.086	.048	.015	
4.0	.201	.105	.031	.182	.095	.028	.146	.077	.023	.112	.060	.018	.081	.044	.013	
5.0	.188	.096	.028	.170	.087	.025	.136	.071	.021	.105	.056	.017	.076	.041	.012	
6.0	.175	.088	.025	.159	.080	.023	.128	.066	.019	.099	.051	.015	.072	.038	.011	
7.0	.164	.081	.023	.149	.074	.021	.120	.061	.018	.093	.048	.014	.068	.035	.010	
8.0	.154	.075	.021	.140	.069	.020	.113	.057	.016	.088	.045	.013	.065	.033	.010	
9.0	.146	.070	.020	.132	.065	.018	.107	.053	.015	.084	.042	.012	.061	.031	.009	
10.0	.138	.066	.018	.125	.061	.017	.102	.050	.014	.080	.040	.011	.059	.029	.008	

pcc	80%			70%			50%			30%			10%			0
pw	50%	30%	10%	50%	30%	10%	50%	30%	10%	50%	30%	10%	50%	30%	10%	0
pfc	20%			20%			20%			20%			20%			0
RCR	RCR:Room Cavity Ratio						Ceiling Cavity Exitance Coefficients(CCEC)									
0.0	.654	.654	.654	.559	.559	.559	.381	.381	.381	.219	.219	.219	.070	.070	.070	
1.0	.644	.624	.606	.551	.535	.521	.377	.368	.361	.217	.213	.210	.069	.069	.068	
2.0	.635	.603	.575	.544	.519	.497	.373	.359	.347	.215	.209	.203	.069	.068	.066	
3.0	.627	.587	.555	.538	.506	.481	.369	.352	.337	.213	.205	.199	.069	.067	.065	
4.0	.620	.575	.540	.532	.497	.469	.366	.346	.331	.212	.203	.196	.068	.066	.064	
5.0	.613	.566	.530	.527	.489	.461	.363	.342	.326	.210	.201	.193	.068	.065	.064	
6.0	.607	.558	.523	.522	.483	.455	.360	.338	.322	.209	.199	.191	.067	.065	.063	
7.0	.602	.552	.517	.517	.478	.451	.358	.335	.319	.208	.198	.190	.067	.065	.063	
8.0	.596	.547	.513	.513	.474	.447	.355	.333	.317	.207	.196	.189	.067	.064	.063	
9.0	.591	.542	.510	.509	.471	.445	.353	.331	.316	.206	.195	.188	.067	.064	.062	
10.0	.587	.539	.507	.506	.468	.442	.351	.329	.314	.205	.195	.188	.066	.064	.062	

C Range: 0 - 360DEG  
 C Interval: 5.0DEG  
 Test Speed: MEDIUM  
 Temperature:25.3DEG  
 Operators:  
 Test Date:2025-08-14

γ Range: 0 - 180DEG  
 γ Interval: 0.5DEG  
 Test System:EVERFINE GO-2000\_V1 SYSTEM V2.0.406.10  
 Humidity:65.0%  
 Test Distance:11.700m [K=0.8547]  
 Remarks:

UGR(Unified Glare Rating) Table

Test:U:229.70V I:0.3327A P:74.362W PF:0.9731 Freq:49.99Hz Lamp Flux:12756.8x1 lm											
NAME:					TYPE:			WEIGHT:			
SPEC.:					DIM.: 900*31			SERIAL No.:			
MFR.: NLD25-0017					SUR.:3.14*0.48*0.448			Shielding Angle:			
ceiling/cavity	0.7	0.7	0.5	0.5	0.3	0.7	0.7	0.5	0.5	0.3	
walls	0.5	0.3	0.5	0.3	0.3	0.5	0.3	0.5	0.3	0.3	
working plane	0.2	0.2	0.2	0.2	0.2	0.2	0.2	0.2	0.2	0.2	
Room dimensions		Viewed crosswise					Viewed endwise				
x = 2H y = 2H		7.3	8.1	8.3	9.1	10.3	7.4	8.2	8.4	9.1	10.3
3H		8.8	9.5	9.8	10.5	11.7	9.0	9.7	10.0	10.7	12.0
4H		9.8	10.4	10.8	11.4	12.7	10.2	10.8	11.1	11.8	13.1
6H		10.8	11.4	11.8	12.4	13.7	11.3	11.9	12.3	12.9	14.2
8H		11.3	11.9	12.4	12.9	14.2	11.9	12.5	12.9	13.5	14.8
12H		11.8	12.3	12.8	13.4	14.7	12.4	12.9	13.4	13.9	15.2
4H 2H		7.6	8.3	8.6	9.2	10.5	7.7	8.3	8.7	9.3	10.6
3H		9.5	10.0	10.5	11.0	12.4	9.6	10.2	10.7	11.2	12.5
4H		10.7	11.2	11.7	12.2	13.6	11.0	11.4	12.0	12.5	13.8
6H		12.0	12.4	13.0	13.4	14.8	12.3	12.8	13.4	13.8	15.2
8H		12.6	13.0	13.6	14.0	15.4	13.0	13.4	14.1	14.4	15.8
12H		13.1	13.5	14.2	14.5	16.0	13.5	13.9	14.6	15.0	16.4
8H 4H		11.1	11.5	12.2	12.6	14.0	11.3	11.7	12.4	12.8	14.2
6H		12.7	13.0	13.8	14.1	15.5	13.0	13.3	14.0	14.3	15.8
8H		13.4	13.7	14.5	14.8	16.3	13.8	14.0	14.9	15.1	16.6
12H		14.1	14.4	15.3	15.5	17.0	14.5	14.7	15.6	15.8	17.3
12H 4H		11.2	11.6	12.3	12.6	14.0	11.4	11.8	12.5	12.8	14.2
6H		12.8	13.1	13.9	14.2	15.7	13.1	13.4	14.2	14.5	15.9
8H		13.7	13.9	14.8	15.0	16.5	14.0	14.2	15.1	15.3	16.8
Variations with the observer position at spacings:											
S = 1.0H		+ 0.2 / - 0.3					+ 0.2 / - 0.3				
1.5H		+ 0.4 / - 0.2					+ 0.3 / - 0.2				
2.0H		+ 0.2 / - 0.3					+ 0.2 / - 0.2				

CIE Pub.117, 12757 lm Total Lamp Luminous Flux Corrected ( $8\log(F/F_0) = 8.8$ )

C Range: 0 - 360DEG  
 C Interval: 5.0DEG  
 Test Speed: MEDIUM  
 Temperature:25.3DEG  
 Operators:  
 Test Date:2025-08-14

γ Range: 0 - 180DEG  
 γ Interval: 0.5DEG  
 Test System:EVERFINE GO-2000\_V1 SYSTEM V2.0.406.10  
 Humidity:65.0%  
 Test Distance:11.700m [K=0.8547]  
 Remarks:

## UTILIZATION FACTORS TABLE

Test:U:229.70V I:0.3327A P:74.362W PF:0.9731 Freq:49.99Hz Lamp Flux:12756.8x1 lm		
NAME:	TYPE:	WEIGHT:
SPEC.:	DIM.: 900*31	SERIAL No.:
MFR.: NLD25-0017	SUR.:3.14*0.48*0.448	Shielding Angle:

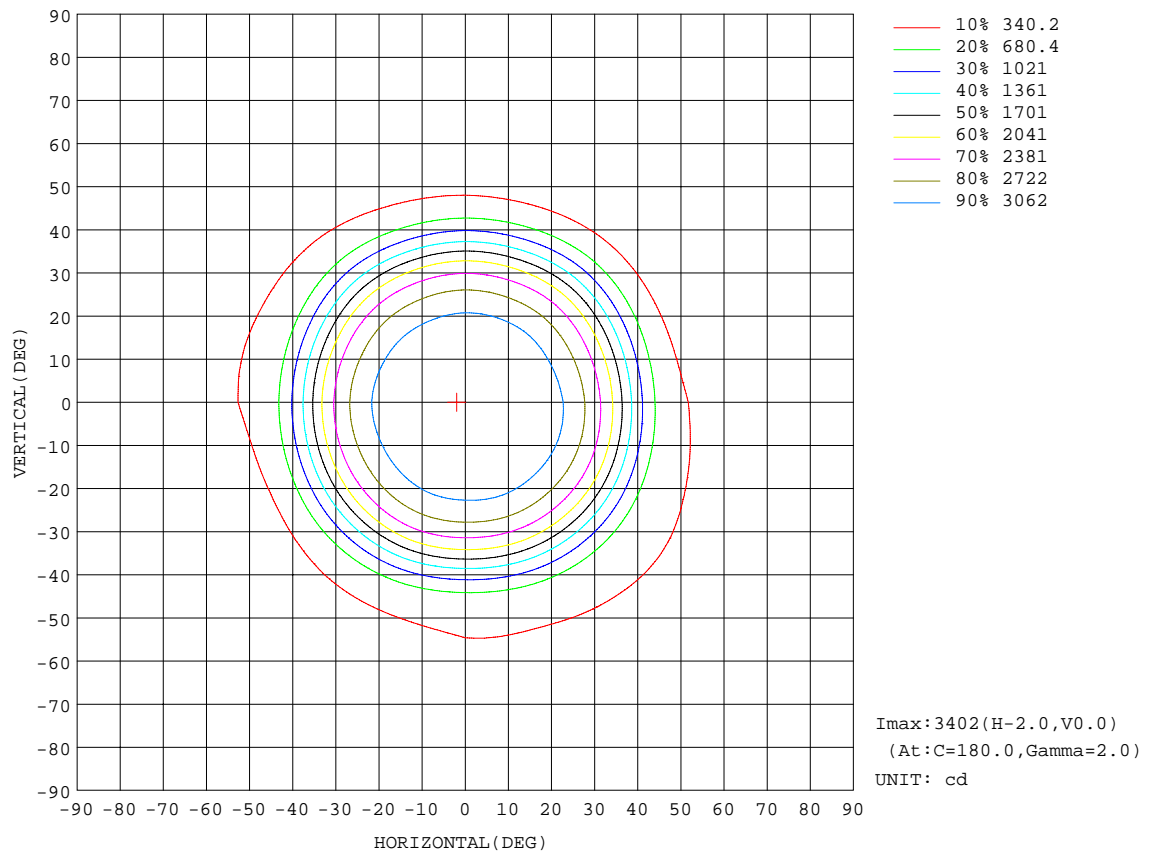
REFLECTANCE										
Ceiling	0.8	0.8	0.8	0.7	0.7	0.7	0.5	0.5	0.5	0
Walls	0.7	0.5	0.3	0.7	0.5	0.3	0.7	0.5	0.3	0
Working plane	0.2	0.2	0.2	0.2	0.2	0.2	0.2	0.2	0.2	0
ROOM INDEX	UTILIZATION FACTORS(PERCENT) $k(RI) \times RCR = 5$									
$k = 0.60$	48	39	33	45	37	32	40	34	30	22
0.80	57	47	41	53	44	39	46	40	35	25
1.00	63	53	47	59	50	44	51	45	40	27
1.25	70	60	53	64	56	50	55	49	44	29
1.50	74	65	58	68	60	55	58	52	48	31
2.00	80	72	65	74	67	61	62	57	53	32
2.50	84	77	71	77	71	66	64	60	56	33
3.00	87	80	75	80	74	69	66	62	59	34
4.00	91	85	81	83	79	75	69	66	63	35
5.00	94	89	85	86	81	78	70	68	65	36
ROOM INDEX	UF(total)									Direct
According to DIN EN 13032-2 2004			Suspended					SHRNOM = 1.25		

C Range: 0 - 360DEG  
 C Interval: 5.0DEG  
 Test Speed: MEDIUM  
 Temperature:25.3DEG  
 Operators:  
 Test Date:2025-08-14

$\gamma$  Range: 0 - 180DEG  
 $\gamma$  Interval: 0.5DEG  
 Test System:EVERFINE GO-2000\_V1 SYSTEM V2.0.406.10  
 Humidity:65.0%  
 Test Distance:11.700m [K=0.8547]  
 Remarks:

## ISOCANDELA DIAGRAM

Test:U:229.70V I:0.3327A P:74.362W PF:0.9731 Freq:49.99Hz Lamp Flux:12756.8x1 lm		
NAME:	TYPE:	WEIGHT:
SPEC.:	DIM.: 900*31	SERIAL No.:
MFR.: NLD25-0017	SUR.:3.14*0.48*0.448	Shielding Angle:



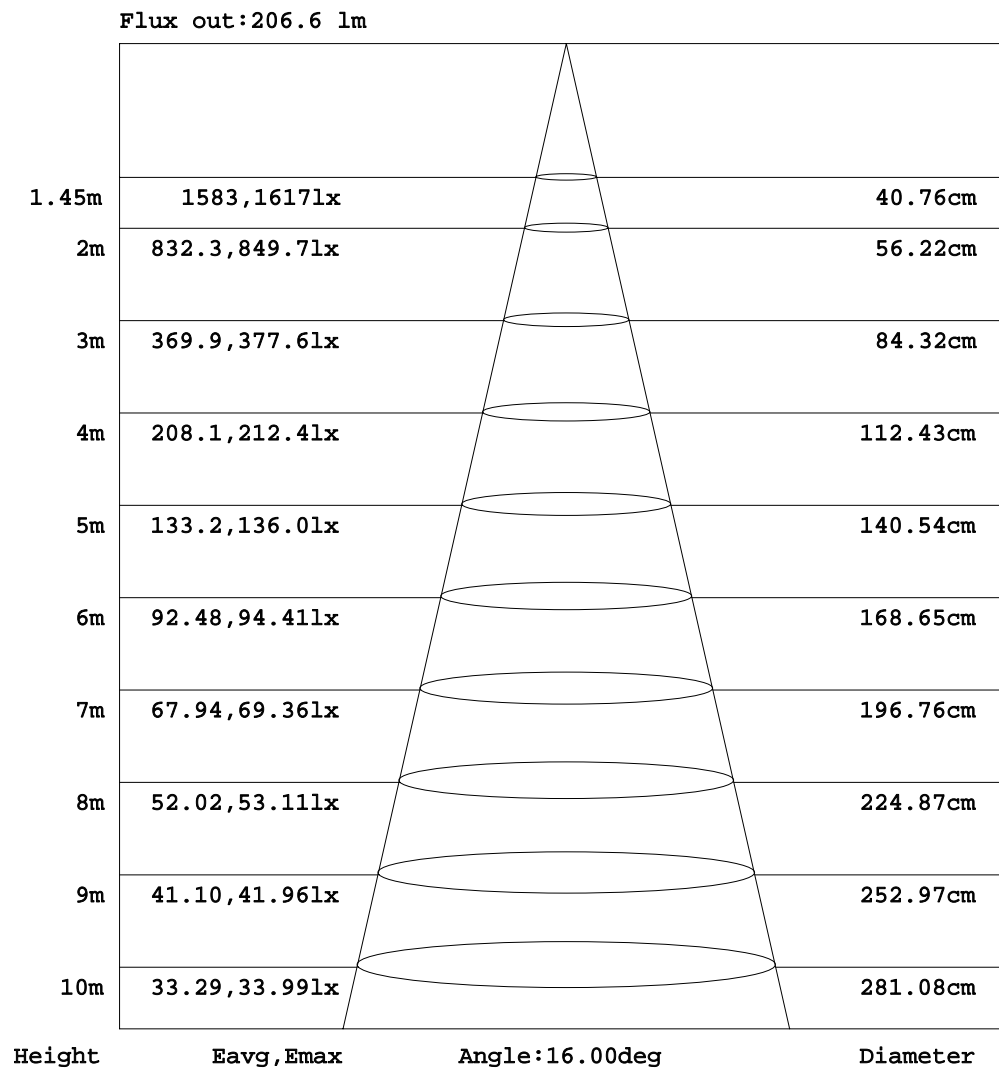
C Range: 0 - 360DEG  
C Interval: 5.0DEG  
Test Speed: MEDIUM  
Temperature:25.3DEG  
Operators:  
Test Date:2025-08-14

$\gamma$  Range: 0 - 180DEG  
 $\gamma$  Interval: 0.5DEG  
Test System:EVERFINE GO-2000\_V1 SYSTEM V2.0.406.10  
Humidity:65.0%  
Test Distance:11.700m [K=0.8547]  
Remarks:



## AAI Figure

Test:U:229.70V I:0.3327A P:74.362W PF:0.9731 Freq:49.99Hz Lamp Flux:12756.8x1 lm		
NAME:	TYPE:	WEIGHT:
SPEC.:	DIM.: 900*31	SERIAL No.:
MFR.: NLD25-0017	SUR.:3.14*0.48*0.448	Shielding Angle:



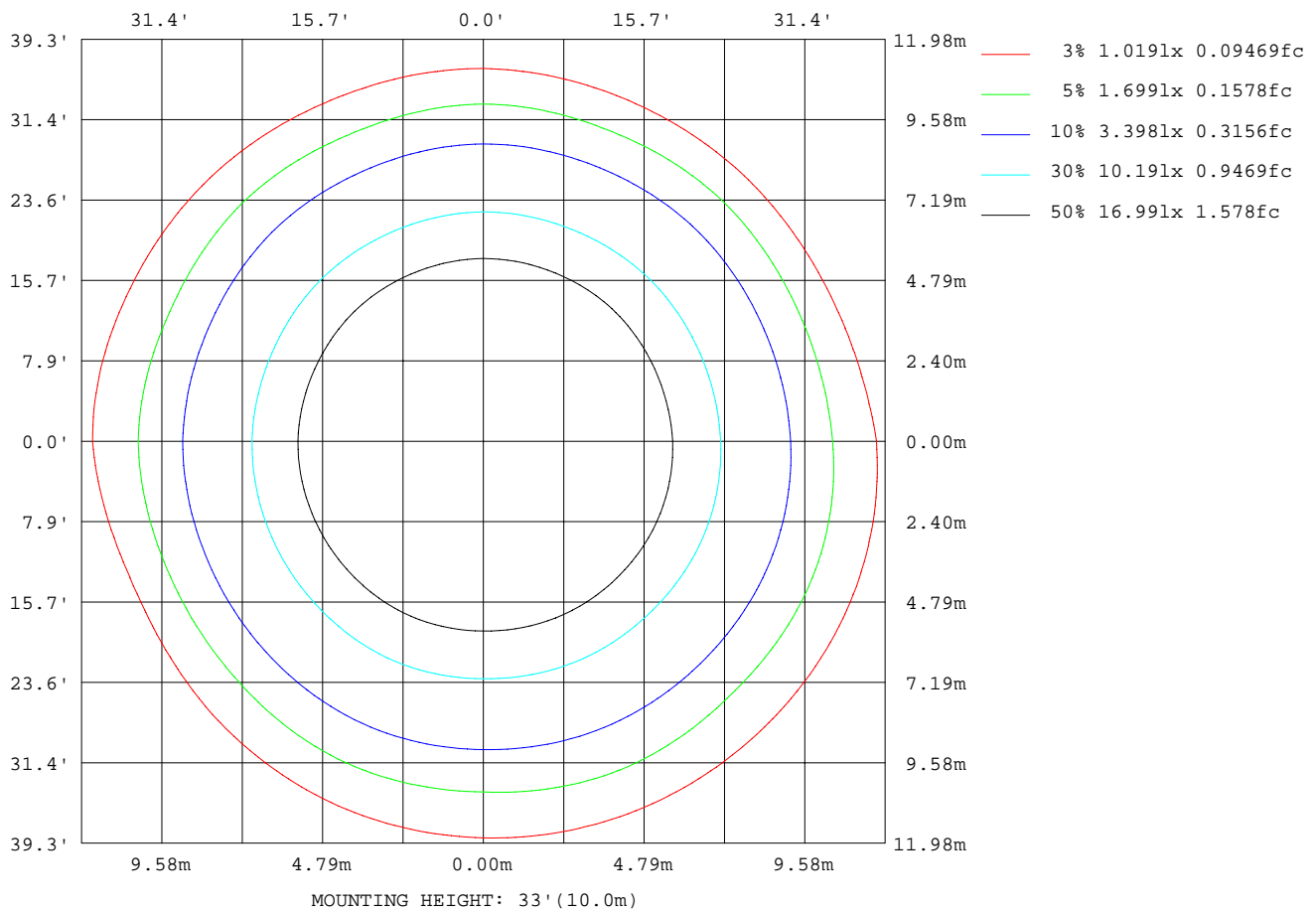
Note:The Curves indicate the illuminated area and the average illumination when the luminaire is at different distance.

C Range: 0 - 360DEG  
 C Interval: 5.0DEG  
 Test Speed: MEDIUM  
 Temperature:25.3DEG  
 Operators:  
 Test Date:2025-08-14

γ Range: 0 - 180DEG  
 γ Interval: 0.5DEG  
 Test System:EVERFINE GO-2000\_V1 SYSTEM V2.0.406.10  
 Humidity:65.0%  
 Test Distance:11.700m [K=0.8547]  
 Remarks:

## ISOLUX DIAGRAM

Test:U:229.70V I:0.3327A P:74.362W PF:0.9731 Freq:49.99Hz Lamp Flux:12756.8x1 lm		
NAME:	TYPE:	WEIGHT:
SPEC.:	DIM.: 900*31	SERIAL No.:
MFR.: NLD25-0017	SUR.:3.14*0.48*0.448	Shielding Angle:



C Range: 0 - 360DEG  
C Interval: 5.0DEG  
Test Speed: MEDIUM  
Temperature:25.3DEG  
Operators:  
Test Date:2025-08-14

$\gamma$  Range: 0 - 180DEG  
 $\gamma$  Interval: 0.5DEG  
Test System:EVERFINE GO-2000\_V1 SYSTEM V2.0.406.10  
Humidity:65.0%  
Test Distance:11.700m [K=0.8547]  
Remarks:

## LED Avg.L Report

Test:U:229.70V I:0.3327A P:74.362W PF:0.9731 Freq:49.99Hz Lamp Flux:12756.8x1 lm		
NAME:	TYPE:	WEIGHT:
SPEC.:	DIM.: 900*31	SERIAL No.:
MFR.: NLD25-0017	SUR.:3.14*0.48*0.448	Shielding Angle:

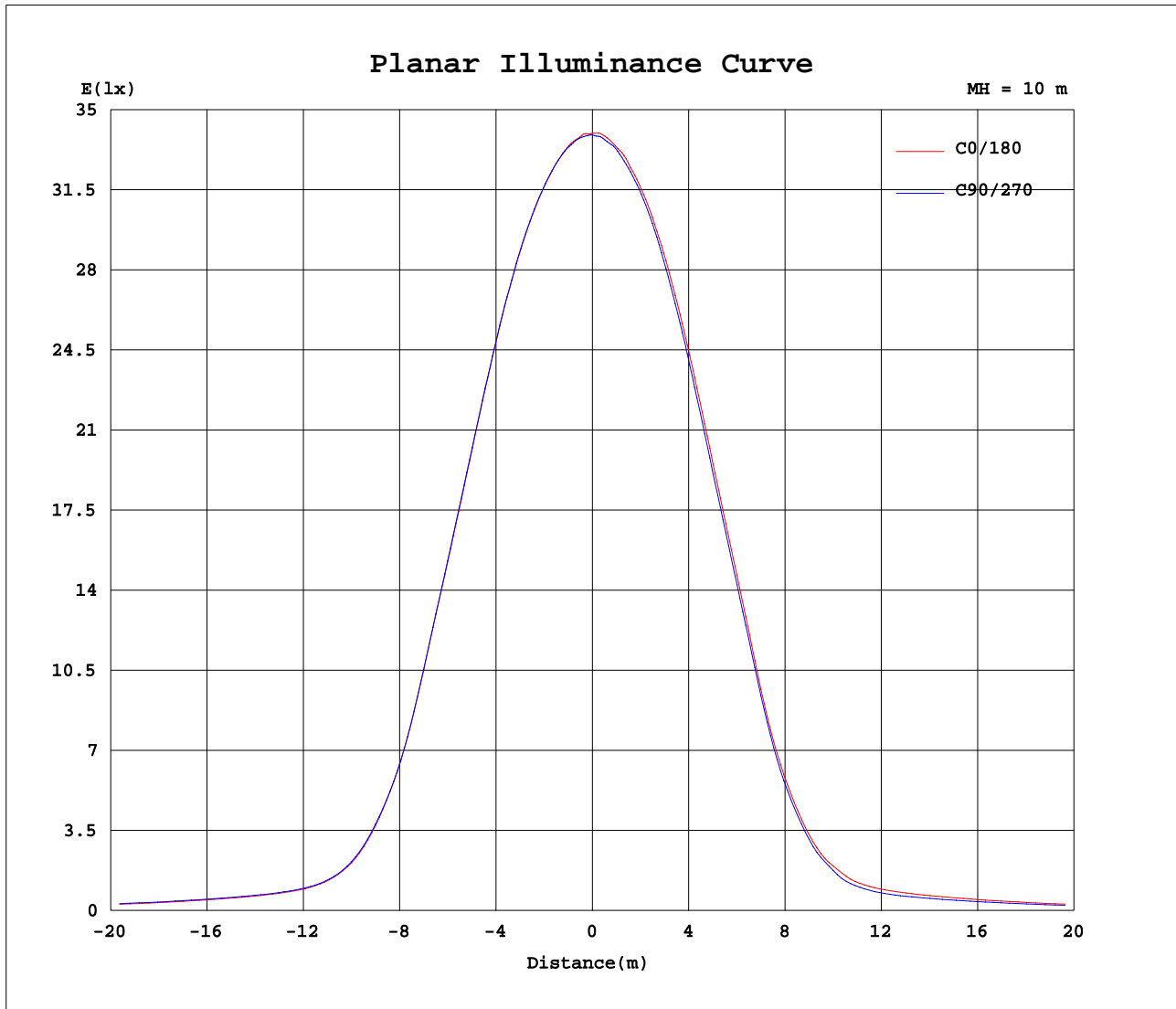
AvgL	cd/m2
L_0~180(65)av	1086
L_0~180(75)av	1391
L_0~180(85)av	1691
L_90~270(65)av	1046
L_90~270(75)av	1435
L_90~270(85)av	1730
L_45(65)av	1000
L_45(75)av	1339
L_45(85)av	1584

Standard: GB/T 29293-2012

C Range: 0 - 360DEG  
C Interval: 5.0DEG  
Test Speed: MEDIUM  
Temperature:25.3DEG  
Operators:  
Test Date:2025-08-14

$\gamma$  Range: 0 - 180DEG  
 $\gamma$  Interval: 0.5DEG  
Test System:EVERFINE GO-2000\_V1 SYSTEM V2.0.406.10  
Humidity:65.0%  
Test Distance:11.700m [K=0.8547]  
Remarks:

## Planar Illuminance Curve



C Range: 0 - 360DEG  
C Interval: 5.0DEG  
Test Speed: MEDIUM  
Temperature: 25.3DEG  
Operators:  
Test Date: 2025-08-14

$\gamma$  Range: 0 - 180DEG  
 $\gamma$  Interval: 0.5DEG  
Test System: EVERFINE GO-2000\_V1 SYSTEM V2.0.406.10  
Humidity: 65.0%  
Test Distance: 11.700m [K=0.8547]  
Remarks:

## LUMINOUS DISTRIBUTION INTENSITY DATA

Test:U:229.70V I:0.3327A P:74.362W PF:0.9731 Freq:49.99Hz Lamp Flux:12756.8x1 lm																		
NAME:									TYPE:					WEIGHT:				
SPEC.:									DIM.: 900*31					SERIAL No.:				
MFR.: NLD25-0017									SUR.:3.14*0.48*0.448					Shielding Angle:				

Table--1

UNIT: cd

C(DEG) γ (DEG)	0	5	10	15	20	25	30	35	40	45	50	55	60	65	70	75	80	85	90
0	3398	3396	3395	3395	3394	3394	3394	3394	3394	3394	3394	3394	3394	3394	3394	3393	3393	3392	3391
5	3392	3391	3389	3388	3388	3388	3388	3389	3389	3390	3389	3388	3388	3387	3387	3387	3386	3386	3386
10	3367	3369	3371	3372	3372	3372	3372	3371	3370	3369	3369	3369	3368	3368	3367	3367	3366	3366	3365
15	3312	3314	3317	3319	3320	3321	3321	3321	3320	3320	3320	3319	3319	3319	3318	3317	3316	3315	3314
20	3184	3189	3193	3196	3198	3199	3199	3198	3197	3196	3196	3196	3196	3196	3195	3193	3190	3188	3185
25	2925	2935	2943	2949	2953	2955	2954	2953	2951	2948	2949	2949	2950	2949	2947	2943	2939	2935	2930
30	2520	2533	2544	2553	2559	2563	2564	2563	2561	2559	2559	2559	2558	2556	2553	2547	2541	2535	2529
35	1916	1937	1954	1968	1977	1980	1978	1974	1969	1963	1963	1964	1964	1963	1958	1949	1939	1929	1920
40	1163	1180	1194	1205	1213	1216	1214	1211	1207	1203	1204	1206	1208	1208	1204	1195	1184	1174	1165
45	591	606	618	628	636	640	640	639	637	635	636	637	638	637	633	626	619	611	604
50	363	370	376	381	384	387	388	388	388	387	386	386	385	384	382	380	378	376	373
55	324	328	333	336	338	340	340	340	339	338	338	338	338	338	338	339	340	340	339
60	311	315	319	322	325	326	327	327	327	326	327	327	328	329	330	331	332	333	332
65	287	292	297	301	304	306	307	307	307	307	307	308	308	309	311	313	316	317	318
70	261	268	273	278	281	284	285	285	285	284	285	285	286	287	289	293	296	298	299
75	237	244	251	256	259	261	262	262	261	260	261	261	262	264	266	269	272	274	275
80	195	202	207	212	216	218	219	219	219	219	219	219	219	220	221	224	226	228	228
85	130	133	135	138	139	141	142	143	144	144	143	141	139	138	138	138	139	138	137
90	22.0	22.2	22.4	22.6	22.7	22.8	22.8	22.7	22.6	22.6	22.5	22.5	22.4	22.3	22.2	22.0	21.8	21.5	21.3
95	67.0	67.7	68.4	68.9	69.2	69.5	69.6	69.6	69.4	69.0	68.1	67.0	65.9	64.7	63.9	63.4	62.8	62.3	61.7
100	141	142	142	142	142	141	140	138	137	135	133	132	130	129	129	130	130	130	130
105	277	277	277	276	275	273	271	268	266	264	264	265	265	266	266	265	264	262	259
110	498	497	496	495	494	494	494	495	495	495	494	494	493	491	489	486	483	479	474
115	872	868	865	861	857	854	850	846	842	838	833	829	825	822	820	821	822	822	821
120	1167	1164	1162	1160	1158	1157	1156	1155	1154	1154	1154	1154	1155	1155	1156	1158	1158	1157	1154
125	1551	1551	1551	1550	1549	1547	1545	1543	1540	1537	1535	1533	1531	1529	1528	1528	1528	1527	1524
130	1868	1867	1866	1864	1862	1859	1856	1852	1848	1843	1835	1827	1819	1812	1808	1807	1807	1807	1807
135	2068	2069	2069	2069	2069	2069	2069	2068	2066	2064	2058	2051	2045	2039	2036	2036	2037	2037	2036
140	2251	2249	2247	2246	2244	2242	2240	2238	2236	2234	2230	2226	2223	2219	2217	2218	2217	2216	2213
145	2398	2399	2399	2399	2398	2397	2396	2394	2391	2389	2385	2381	2378	2374	2372	2372	2371	2369	2365
150	2523	2521	2519	2517	2515	2513	2512	2511	2509	2508	2506	2503	2501	2498	2498	2499	2500	2498	2494
155	2625	2622	2620	2617	2616	2614	2613	2613	2612	2611	2609	2607	2605	2602	2601	2601	2601	2599	2594
160	2700	2697	2695	2693	2691	2689	2689	2688	2687	2687	2686	2685	2683	2682	2681	2681	2680	2679	2676
165	2757	2755	2754	2752	2751	2750	2748	2747	2746	2745	2745	2746	2745	2745	2743	2740	2736	2733	2729
170	2800	2797	2794	2792	2790	2790	2789	2789	2790	2790	2790	2789	2788	2786	2782	2776	2771	2766	2762
175	2823	2821	2819	2817	2815	2814	2813	2812	2812	2812	2813	2815	2816	2815	2808	2796	2784	2774	2766
180	2826	2826	2826	2826	2826	2826	2826	2826	2826	2826	2826	2826	2826	2826	2826	2826	2826	2826	2826

C Range: 0 - 360DEG  
C Interval: 5.0DEG  
Test Speed: MEDIUM  
Temperature:25.3DEG  
Operators:  
Test Date:2025-08-14

γ Range: 0 - 180DEG  
γ Interval: 0.5DEG  
Test System:EVERFINE GO-2000\_V1 SYSTEM V2.0.406.10  
Humidity:65.0%  
Test Distance:11.700m [K=0.8547]  
Remarks:

## LUMINOUS DISTRIBUTION INTENSITY DATA

Test:U:229.70V I:0.3327A P:74.362W PF:0.9731 Freq:49.99Hz Lamp Flux:12756.8x1 lm																		
NAME:									TYPE:					WEIGHT:				
SPEC.:									DIM.: 900*31					SERIAL No.:				
MFR.: NLD25-0017									SUR.:3.14*0.48*0.448					Shielding Angle:				

Table--2

UNIT: cd

C(DEC) γ (DEC)	95	100	105	110	115	120	125	130	135	140	145	150	155	160	165	170	175	180	185
0	3390	3389	3387	3386	3385	3383	3382	3381	3379	3377	3375	3374	3374	3376	3381	3387	3393	3398	3398
5	3385	3384	3383	3382	3380	3379	3378	3376	3375	3372	3370	3368	3367	3369	3374	3380	3385	3390	3391
10	3365	3365	3364	3364	3363	3361	3359	3357	3355	3352	3350	3347	3346	3348	3352	3357	3361	3365	3364
15	3313	3312	3311	3309	3307	3304	3301	3298	3294	3289	3285	3281	3279	3279	3283	3287	3291	3294	3292
20	3184	3183	3181	3179	3175	3169	3163	3156	3150	3144	3139	3135	3132	3131	3134	3137	3139	3141	3136
25	2928	2926	2924	2921	2915	2907	2898	2888	2879	2873	2867	2862	2858	2857	2857	2858	2859	2858	2850
30	2528	2527	2526	2524	2518	2508	2497	2486	2475	2466	2459	2452	2446	2442	2439	2436	2433	2429	2420
35	1919	1919	1919	1917	1907	1889	1870	1849	1830	1816	1805	1795	1786	1780	1775	1770	1765	1759	1745
40	1164	1163	1162	1159	1151	1137	1122	1106	1090	1078	1067	1058	1051	1048	1048	1049	1049	1048	1037
45	604	605	605	604	596	583	568	554	541	534	531	529	529	533	538	544	549	551	542
50	371	368	365	362	357	353	348	342	337	330	323	318	316	319	329	340	350	359	359
55	337	333	329	325	321	317	312	308	303	295	288	283	280	285	296	309	321	332	333
60	330	326	322	317	312	307	301	296	290	282	274	268	264	268	280	294	307	319	319
65	314	310	304	298	292	286	281	275	269	259	250	242	238	241	253	266	280	292	292
70	296	291	285	279	273	267	261	255	248	236	225	215	208	211	222	235	248	260	260
75	272	268	263	258	252	247	241	233	225	211	196	183	173	173	182	193	206	217	217
80	227	225	221	216	208	199	189	178	166	153	141	130	122	122	130	139	148	156	154
85	131	125	117	110	103	98.0	92.9	87.9	83.2	77.6	72.3	67.4	63.1	60.0	58.1	56.9	56.2	55.8	55.3
90	21.0	20.7	20.3	19.9	19.5	18.9	18.3	17.7	17.1	16.4	15.7	15.1	14.5	14.2	14.1	14.1	14.0	14.0	13.6
95	60.4	59.1	57.9	56.7	56.0	55.7	55.7	55.7	55.9	55.8	55.8	55.8	56.0	56.5	57.4	58.2	58.9	59.3	58.6
100	126	121	117	112	110	109	109	110	111	112	113	113	114	115	116	116	117	117	116
105	254	249	244	239	236	234	234	233	234	233	233	233	234	236	237	238	239	239	239
110	468	461	454	449	446	446	447	447	447	441	434	427	422	421	425	431	436	441	442
115	816	810	803	797	795	796	796	797	795	784	773	762	753	752	759	768	778	787	791
120	1142	1128	1115	1103	1097	1099	1101	1103	1104	1092	1078	1066	1055	1053	1061	1071	1082	1092	1094
125	1520	1514	1506	1498	1488	1475	1463	1452	1442	1438	1436	1435	1435	1435	1434	1434	1434	1436	1440
130	1806	1805	1803	1799	1794	1785	1777	1769	1763	1762	1763	1765	1769	1773	1777	1781	1785	1788	1788
135	2028	2020	2011	2002	1996	1991	1988	1986	1984	1985	1986	1988	1989	1988	1984	1980	1977	1975	1978
140	2203	2191	2179	2169	2166	2169	2175	2180	2186	2185	2183	2180	2176	2173	2169	2166	2163	2160	2157
145	2350	2334	2319	2307	2304	2312	2322	2333	2343	2343	2341	2337	2333	2329	2326	2323	2320	2318	2318
150	2477	2458	2440	2425	2423	2434	2448	2464	2477	2478	2476	2472	2466	2462	2459	2457	2454	2452	2451
155	2579	2563	2547	2535	2534	2544	2556	2570	2582	2582	2580	2576	2572	2569	2568	2568	2568	2568	2567
160	2666	2655	2645	2637	2636	2643	2651	2660	2668	2668	2666	2664	2660	2658	2657	2656	2656	2655	2655
165	2728	2728	2728	2729	2729	2731	2732	2733	2733	2731	2729	2727	2724	2724	2724	2725	2726	2727	2727
170	2764	2767	2771	2775	2779	2780	2782	2782	2782	2781	2779	2777	2775	2774	2774	2774	2774	2774	2773
175	2773	2783	2794	2805	2812	2813	2813	2812	2811	2811	2811	2810	2810	2810	2810	2809	2809	2808	2807
180	2826	2826	2826	2826	2826	2826	2826	2826	2826	2826	2826	2826	2826	2826	2826	2826	2826	2826	2826

C Range: 0 - 360DEG  
C Interval: 5.0DEG  
Test Speed: MEDIUM  
Temperature:25.3DEG  
Operators:  
Test Date:2025-08-14

γ Range: 0 - 180DEG  
γ Interval: 0.5DEG  
Test System:EVERFINE GO-2000\_V1 SYSTEM V2.0.406.10  
Humidity:65.0%  
Test Distance:11.700m [K=0.8547]  
Remarks:

## LUMINOUS DISTRIBUTION INTENSITY DATA

Test:U:229.70V I:0.3327A P:74.362W PF:0.9731 Freq:49.99Hz Lamp Flux:12756.8x1 lm																		
NAME:									TYPE:					WEIGHT:				
SPEC.:									DIM.: 900*31					SERIAL No.:				
MFR.: NLD25-0017									SUR.:3.14*0.48*0.448					Shielding Angle:				

Table--3

UNIT: cd

C(DEG) γ (DEG)	190	195	200	205	210	215	220	225	230	235	240	245	250	255	260	265	270	275	280
0	3397	3396	3395	3394	3394	3394	3394	3394	3394	3394	3394	3394	3394	3393	3393	3392	3391	3390	3389
5	3390	3389	3387	3385	3384	3384	3383	3382	3380	3379	3378	3377	3377	3378	3379	3379	3380	3378	3375
10	3362	3359	3356	3354	3353	3353	3352	3351	3350	3348	3346	3345	3343	3343	3342	3342	3341	3341	3341
15	3289	3285	3281	3278	3277	3276	3274	3273	3270	3266	3263	3261	3260	3261	3262	3264	3265	3265	3264
20	3131	3124	3118	3113	3109	3106	3103	3100	3096	3092	3089	3087	3086	3088	3090	3092	3095	3096	3098
25	2841	2831	2822	2816	2812	2809	2807	2805	2800	2796	2792	2789	2789	2791	2794	2798	2802	2802	2802
30	2410	2400	2390	2384	2381	2379	2377	2375	2370	2364	2359	2355	2354	2357	2361	2365	2369	2369	2370
35	1731	1718	1705	1699	1699	1701	1703	1705	1699	1693	1688	1683	1683	1689	1695	1703	1709	1709	1709
40	1025	1012	1001	995	995	996	998	999	992	985	978	972	972	977	983	989	996	995	994
45	531	520	509	504	505	507	509	510	501	492	482	474	473	478	484	490	496	491	486
50	357	353	348	343	339	335	331	327	322	317	313	308	305	303	300	299	297	294	292
55	332	328	323	319	316	313	310	306	301	297	292	287	283	279	276	273	270	266	262
60	317	313	308	305	303	302	300	298	293	288	282	277	272	269	266	263	259	255	250
65	289	285	281	278	278	278	278	277	273	268	263	257	253	250	246	243	240	235	230
70	257	254	249	247	248	250	251	251	248	244	239	235	231	229	227	225	222	216	210
75	215	211	208	207	210	212	215	217	215	212	208	205	202	200	199	196	194	188	182
80	151	146	142	142	146	150	155	159	160	161	160	158	156	153	150	146	141	135	129
85	55.0	55.0	55.5	56.7	58.8	60.9	62.9	64.5	64.5	64.0	63.1	61.9	60.3	58.5	56.6	54.7	53.1	52.0	51.2
90	13.2	12.8	12.4	12.2	12.1	12.1	12.1	12.2	12.3	12.4	12.5	12.8	13.1	13.7	14.3	15.0	15.6	16.2	16.7
95	57.6	56.6	55.6	55.1	55.3	55.7	56.2	56.8	57.1	57.5	58.1	58.7	59.7	61.0	62.4	63.7	64.9	65.8	66.4
100	115	114	112	111	109	107	106	106	109	112	117	122	127	132	137	142	145	147	148
105	237	236	233	229	224	219	216	216	223	233	245	256	266	273	278	283	287	291	293
110	441	439	437	434	430	427	426	428	441	456	472	487	498	504	508	512	514	519	523
115	792	792	790	785	776	768	762	758	767	779	792	806	817	825	832	839	845	854	862
120	1094	1094	1092	1090	1089	1089	1089	1090	1095	1102	1110	1119	1131	1143	1156	1168	1179	1186	1190
125	1445	1449	1454	1457	1458	1459	1459	1460	1461	1463	1466	1470	1478	1489	1500	1510	1519	1518	1515
130	1788	1787	1786	1787	1788	1790	1792	1793	1790	1787	1785	1785	1790	1801	1812	1823	1833	1832	1830
135	1983	1988	1994	1999	2003	2006	2009	2010	2008	2006	2004	2003	2006	2013	2020	2028	2033	2031	2027
140	2154	2153	2152	2153	2157	2161	2164	2168	2165	2161	2159	2159	2166	2179	2195	2210	2223	2225	2225
145	2318	2319	2320	2321	2323	2324	2325	2325	2325	2324	2323	2323	2325	2328	2332	2338	2344	2353	2362
150	2450	2450	2449	2448	2448	2447	2445	2443	2437	2432	2427	2425	2429	2441	2454	2468	2482	2490	2496
155	2566	2565	2563	2562	2561	2561	2560	2559	2558	2557	2556	2557	2558	2561	2565	2570	2576	2584	2591
160	2655	2654	2654	2653	2653	2652	2651	2651	2651	2652	2653	2654	2653	2650	2649	2648	2649	2657	2666
165	2727	2726	2726	2725	2724	2724	2723	2723	2724	2726	2727	2726	2721	2711	2701	2692	2688	2698	2711
170	2771	2770	2769	2768	2768	2769	2769	2770	2773	2776	2777	2776	2769	2756	2742	2730	2722	2733	2747
175	2806	2805	2804	2804	2803	2802	2801	2801	2804	2807	2808	2806	2795	2776	2756	2739	2727	2741	2761
180	2826	2826	2826	2826	2826	2826	2826	2826	2826	2826	2826	2826	2826	2826	2826	2826	2826	2826	2826

C Range: 0 - 360DEG  
C Interval: 5.0DEG  
Test Speed: MEDIUM  
Temperature:25.3DEG  
Operators:  
Test Date:2025-08-14

γ Range: 0 - 180DEG  
γ Interval: 0.5DEG  
Test System:EVERFINE GO-2000\_V1 SYSTEM V2.0.406.10  
Humidity:65.0%  
Test Distance:11.700m [K=0.8547]  
Remarks:

## LUMINOUS DISTRIBUTION INTENSITY DATA

Test:U:229.70V I:0.3327A P:74.362W PF:0.9731 Freq:49.99Hz Lamp Flux:12756.8x1 lm																	
NAME:									TYPE:						WEIGHT:		
SPEC.:									DIM.: 900*31						SERIAL No.:		
MFR.: NLD25-0017									SUR.:3.14*0.48*0.448						Shielding Angle:		

Table--4

UNIT: cd

C(DEG) γ (DEG)	285	290	295	300	305	310	315	320	325	330	335	340	345	350	355				
0	3387	3386	3385	3383	3382	3381	3379	3377	3375	3374	3374	3375	3379	3384	3390				
5	3373	3371	3370	3370	3370	3370	3370	3367	3364	3362	3361	3363	3367	3374	3382				
10	3340	3340	3340	3340	3340	3340	3340	3338	3337	3337	3337	3340	3344	3350	3358				
15	3264	3263	3264	3265	3267	3269	3270	3270	3270	3271	3273	3277	3283	3291	3300				
20	3100	3102	3104	3108	3111	3115	3118	3120	3122	3125	3129	3135	3145	3156	3169				
25	2803	2805	2809	2815	2822	2830	2838	2841	2845	2850	2855	2864	2876	2890	2906				
30	2371	2373	2379	2389	2400	2411	2422	2426	2431	2436	2442	2451	2465	2481	2499				
35	1709	1712	1720	1735	1751	1768	1785	1794	1803	1812	1822	1836	1852	1871	1893				
40	994	995	1002	1013	1026	1039	1052	1056	1060	1065	1071	1081	1097	1116	1138				
45	481	476	478	486	496	506	515	517	517	519	521	528	539	554	571				
50	289	287	285	284	283	283	284	286	289	293	299	307	318	331	346				
55	258	255	252	250	249	248	248	249	251	255	261	269	279	292	307				
60	246	242	238	237	236	235	236	237	240	243	249	257	267	279	294				
65	225	221	217	215	213	213	214	215	218	223	229	237	247	259	272				
70	204	198	195	193	193	193	195	197	199	203	208	215	224	235	247				
75	176	171	168	167	168	169	172	174	178	182	187	194	203	213	224				
80	124	119	117	118	120	123	127	131	135	140	147	154	163	172	183				
85	50.7	50.6	50.9	51.6	52.8	54.5	56.6	58.5	61.3	65.2	70.6	78.2	88.3	100	114				
90	17.2	17.6	18.0	18.4	18.7	19.0	19.2	19.4	19.7	19.9	20.1	20.4	20.8	21.2	21.6				
95	66.7	66.7	66.0	64.5	63.0	61.8	61.0	62.4	64.2	66.2	68.1	69.2	69.4	69.1	68.3				
100	148	147	144	140	137	133	131	133	136	139	143	145	145	144	143				
105	295	294	291	286	279	274	269	272	276	281	285	288	287	285	282				
110	526	527	524	517	509	502	497	500	505	511	516	518	516	512	506				
115	868	874	876	874	871	867	865	866	869	872	874	876	876	875	874				
120	1193	1193	1189	1180	1171	1162	1156	1160	1167	1174	1181	1184	1183	1180	1175				
125	1512	1510	1513	1521	1530	1541	1552	1563	1574	1582	1588	1590	1586	1578	1566				
130	1826	1824	1825	1831	1839	1847	1854	1860	1865	1868	1871	1873	1873	1873	1871				
135	2024	2021	2024	2033	2042	2053	2062	2068	2072	2075	2077	2078	2077	2075	2073				
140	2224	2222	2223	2227	2232	2237	2241	2245	2249	2252	2254	2255	2255	2255	2253				
145	2371	2380	2386	2388	2390	2391	2392	2395	2398	2401	2403	2404	2404	2403	2401				
150	2502	2506	2509	2511	2513	2514	2516	2519	2522	2524	2527	2528	2528	2527	2525				
155	2599	2606	2610	2611	2612	2613	2613	2616	2618	2621	2624	2625	2626	2626	2626				
160	2676	2685	2691	2692	2693	2692	2692	2694	2697	2699	2701	2702	2703	2703	2702				
165	2726	2740	2749	2751	2752	2752	2751	2753	2755	2756	2758	2759	2759	2758	2758				
170	2763	2779	2789	2792	2794	2794	2793	2794	2795	2796	2797	2798	2798	2799	2800				
175	2783	2805	2818	2821	2821	2820	2818	2818	2819	2820	2820	2821	2822	2822	2823				
180	2826	2826	2826	2826	2826	2826	2826	2826	2826	2826	2826	2826	2826	2826	2826				

C Range: 0 - 360DEG  
C Interval: 5.0DEG  
Test Speed: MEDIUM  
Temperature:25.3DEG  
Operators:  
Test Date:2025-08-14

γ Range: 0 - 180DEG  
γ Interval: 0.5DEG  
Test System:EVERFINE GO-2000\_V1 SYSTEM V2.0.406.10  
Humidity:65.0%  
Test Distance:11.700m [K=0.8547]  
Remarks: